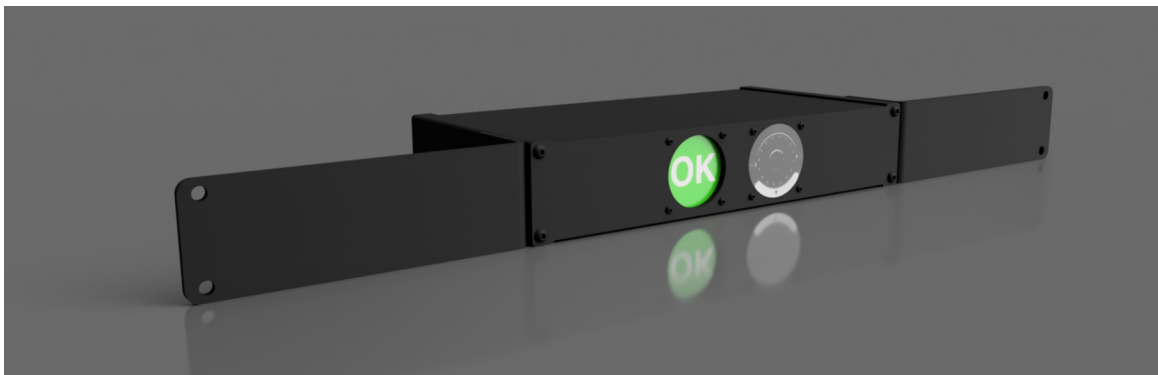


Meet Horatio

Horatio provides monitoring, diagnostics, and issue forensics for unattended lighting systems, dramatically increasing the visibility of a system's inner workings from afar.

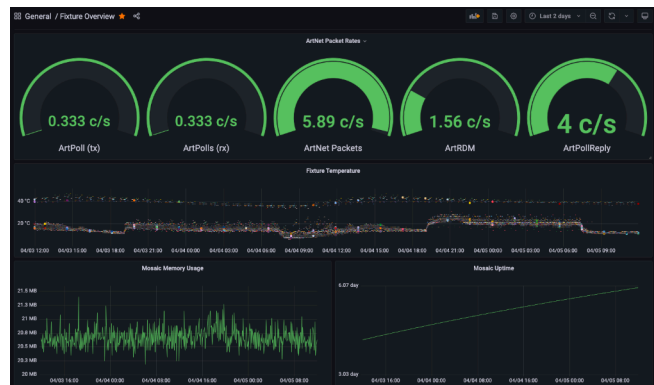
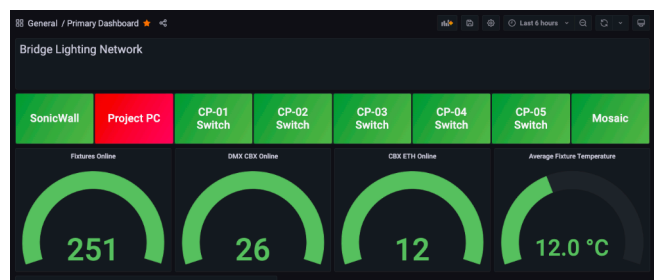
Horatio can integrate with any lighting network and monitor all devices on that network, even looking through supported nodes to see RDM fixtures, in order to send out alerts when the system isn't working as it should.



How It Works

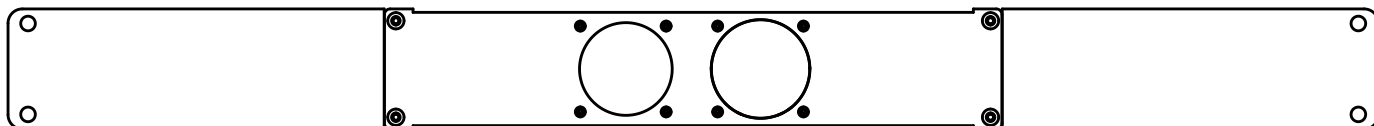
Horatio consists of two parts: the Horat.io website and the Horatio Bridge Device.

- **Horat.io** is a cloud-based system that powers notifications and provides a clean and easy-to-use mobile and desktop experience.
- The **Horatio Bridge Device** is a 1RU embedded system that bridges between a lighting network and the internet. It provides a secure connection into the lighting network, queues reports, and provides local storage of data, even if the network's internet connection goes down.



What can Horatio monitor?

Horatio is manufacturer agnostic, so it can monitor nearly anything accessible through the ethernet network, including (but not limited to) consoles, nodes, architectural controls, managed switches, media servers, relay panels, fixtures, projectors, and show controllers. There is no hard limit to how many devices Horatio can monitor.



Front panel includes: Small LCD Display; Selector wheel



Back panel includes: (2) Ethernet; 5VDC/2A input

Key Features

Monitoring:

- ARP and TCP based device monitoring
- RDM monitoring through nodes (Pathway and ArtNet)
- sACN, Pathway, and ArtNet monitoring
- RDM sensor logging
- RDM fixture offline status
- Syslog server, with upload to our servers
- OSC and UDP message logging
- Custom device names ("First Floor Switch" vs. "10.0.0.5")

Additional Features:

- Preset recall via UDP
- NTP server for high-quality time service
- Local real-time status display on device or via local ethernet connection
- Access logs available for review

Notifications:

- SMS alerts
- E-mail alerts
- Periodic e-mail alerts

Specs:

- Size: 1RU (19"x1.75") x 6"D
- 100-240VAC to 5VDC adapter, 10W maximum
- No fans, all passive cooling
- DIN-rail mount version also available
- Dual-NICs span the internet network and lighting network, keeping your lighting system off the internet